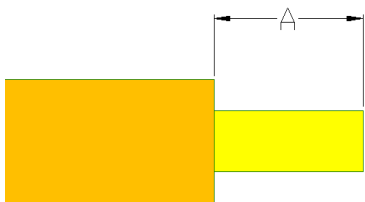


# E250/E200/E150 系列产品安装说明书

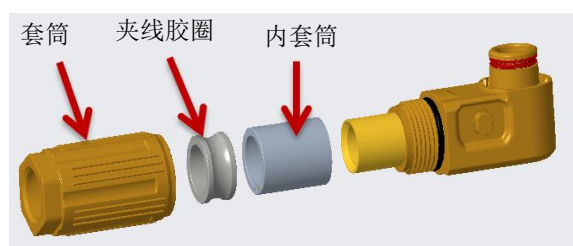
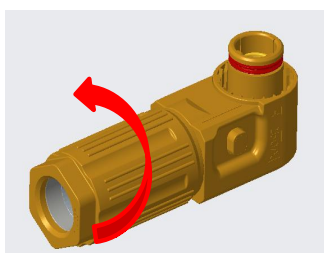
## 一、插头操作说明

### 【1.1】下剥导线

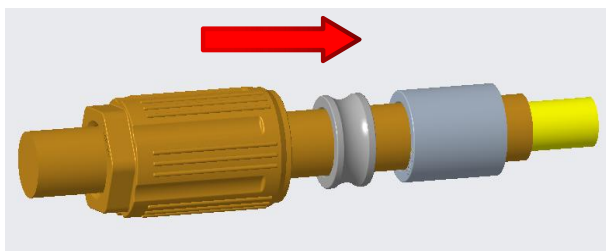


建议剥线尺寸			
型号	适配电缆	电缆外径 (mm)	"A"尺寸 (mm)
E150	2 AWG (35mm <sup>2</sup> )	Φ 11.5±0.5	17.0±0.5
E200	1/0 AWG (50mm <sup>2</sup> )	Φ 13.6±0.5	17.0±0.5
E250	2/0 AWG (70mm <sup>2</sup> )	Φ 15.0±0.5	17.0±0.5

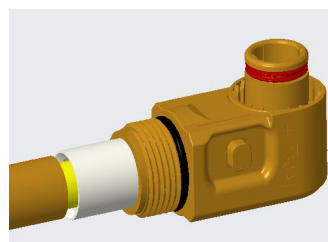
### 【1.2】拆卸套筒



### 【1.3】套导线

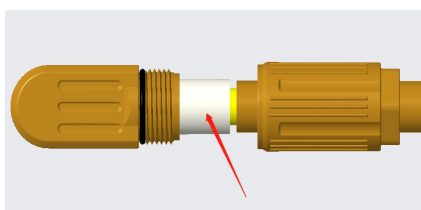


将导线穿过套筒、夹线胶圈与内套筒



将剥线端装入接线孔

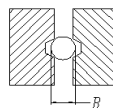
### 【1.4】压接线(线缆采用六边形刀具压接)



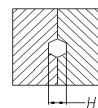
压接位置

选好合适压块，用液压钳将压紧

导线截面积 (mm <sup>2</sup> )	压接前直径B (mm)	压接高度H (mm)	端子拉脱(N)
2 AWG (35mm <sup>2</sup> )	12±0.15	8.5±0.20	≥2700
1/0 AWG (50mm <sup>2</sup> )	13±0.15	10.5±0.20	≥2700
2/0 AWG (70mm <sup>2</sup> )	16±0.15	11.8±0.20	≥2700



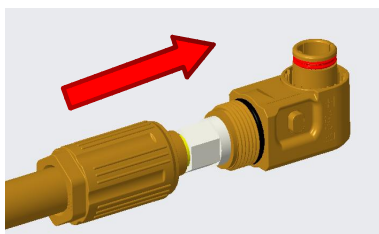
压接前



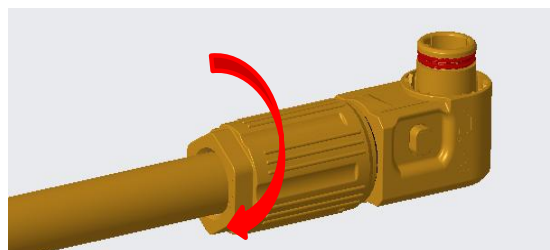
压接后



### 【1.5】拧套筒



套筒按箭头方向移动，将夹线胶圈、内套筒安装到位

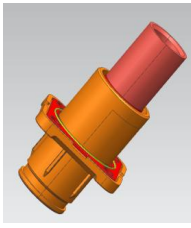


使用1.8±0.2N.m扭力将套筒拧紧

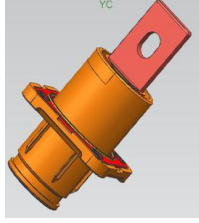
## 二、插座操作说明

### 【2.1】插座规格、安装孔尺寸及安装图示

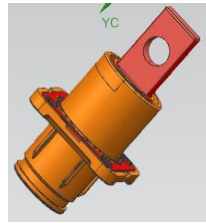
#### 【2.1.1】插座外形及接线方式



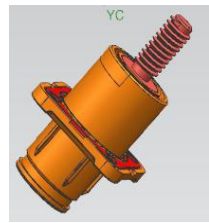
压接式



光孔铜排

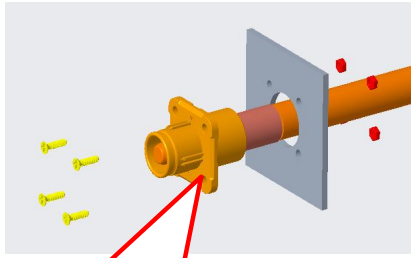


螺孔铜排

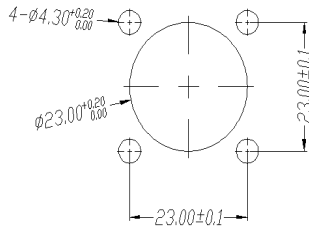


螺柱式

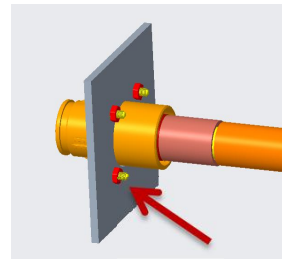
#### 【2.1.2】安装孔尺寸



将线穿过中间安装孔，四个定位孔装上4颗M4螺钉并使用1.0 N.m扭力将螺丝拧紧



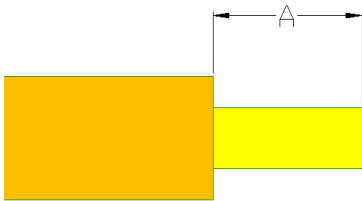
安装孔尺寸



螺钉高出面板长度≤3mm

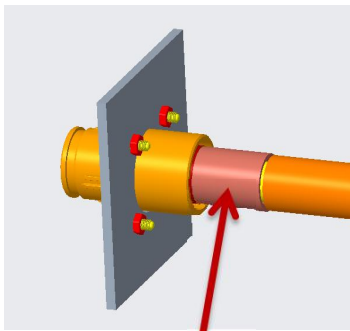
### 【2.2】压接式

#### 【2.2.1】下剥导线



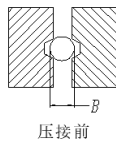
建议剥线尺寸			
型号	适配电缆	电缆外径(mm)	"A"尺寸(mm)
E150	2 AWG (35mm <sup>2</sup> )	φ 11.5 ± 0.5	17.0 ± 0.5
E200	1/0 AWG (50mm <sup>2</sup> )	φ 13.6 ± 0.5	17.0 ± 0.5
E250	2/0 AWG (70mm <sup>2</sup> )	φ 15.0 ± 0.5	17.0 ± 0.5

#### 【2.2.2】压接线(线缆采用六边形刀具压接)

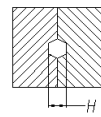


压接位置

导线截面积 (mm <sup>2</sup> )	压接高度H (mm)	端子拉脱(N)
2 AWG (35mm <sup>2</sup> )	8.5 ± 0.15	≥2700
1/0 AWG (50mm <sup>2</sup> )	10.5 ± 0.15	≥2700
2/0 AWG (70mm <sup>2</sup> )	11.8 ± 0.15	≥2700



压接前



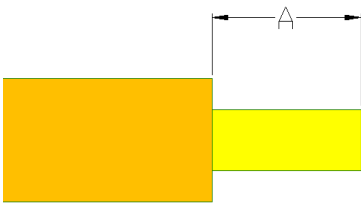
压接后



将剥线端直接装入接线孔，然后选好合适压块，用液压钳将导线与铜套铆压

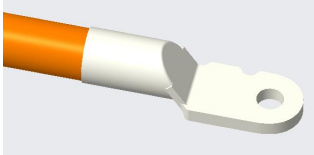
### 【2.3】光孔铜排

#### 【2.3.1】下剥导线

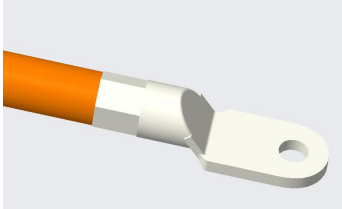


建议剥线尺寸			
型号	适配电缆	电缆外径(mm)	"A"尺寸(mm)
E150	2 AWG (35mm <sup>2</sup> )	φ 11.5±0.5	17.0±0.5
E200	1/0 AWG (50mm <sup>2</sup> )	φ 13.6±0.5	17.0±0.5
E250	2/0 AWG (70mm <sup>2</sup> )	φ 15.0±0.5	17.0±0.5

#### 【2.3.2】导线铆压接线线耳(线缆采用六边形刀具压接)

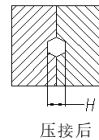
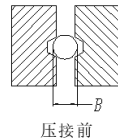


将剥线端装入准备好的接线线耳中

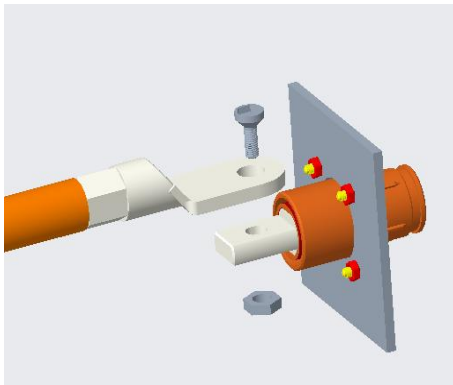


选好合适压块，用液压钳将导线与接线线耳压紧

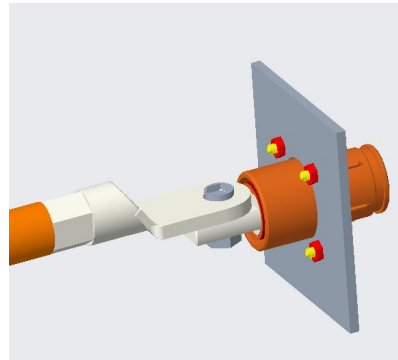
导线截面积 (mm <sup>2</sup> )	压接高度H (mm)	端子拉脱(N)
2 AWG (35mm <sup>2</sup> )	8.5±0.15	≥2700
1/0 AWG (50mm <sup>2</sup> )	10.5±0.15	≥2700
2/0 AWG (70mm <sup>2</sup> )	11.8±0.15	≥2700



#### 【2.3.3】导线连接



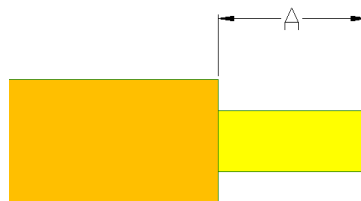
用M5螺丝螺母将接好线的线耳与插座导体锁在一起



螺母用扳手固定，用内六角扳手锁紧螺丝，锁紧扭力为1.5N.m;

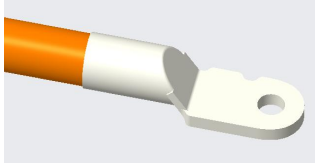
### 【2.4】螺孔铜排

#### 【2.4.1】下剥导线

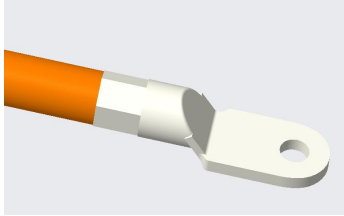


建议剥线尺寸			
型号	适配电缆	电缆外径(mm)	"A"尺寸(mm)
E150	2 AWG (35mm <sup>2</sup> )	φ 11.5±0.5	17.0±0.5
E200	1/0 AWG (50mm <sup>2</sup> )	φ 13.6±0.5	17.0±0.5
E250	2/0 AWG (70mm <sup>2</sup> )	φ 15.0±0.5	17.0±0.5

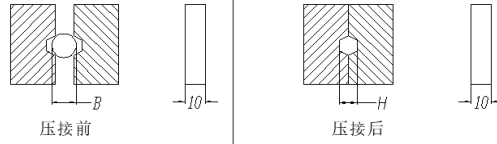
**【2.4.2】导线铆压接线线耳(线缆采用六边形刀具压接)**



将剥线端装入准备好的接线线耳中

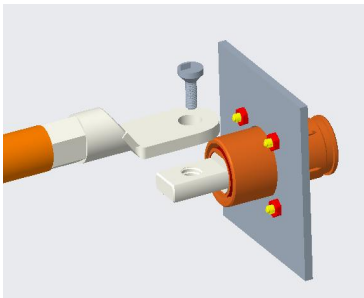


导线截面积 (mm <sup>2</sup> )	压接高度H (mm)	端子拉脱(N)
2 AWG (35mm <sup>2</sup> )	8.5±0.15	≥2700
1/0 AWG (50mm <sup>2</sup> )	10.5±0.15	≥2700
2/0 AWG (70mm <sup>2</sup> )	11.8±0.15	≥2700

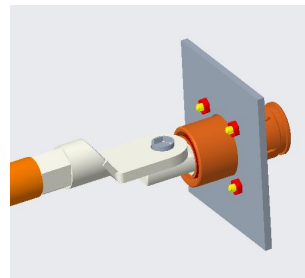


选好合适压块，用液压钳将导线与接线线耳压紧

**【2.4.3】导线连接**



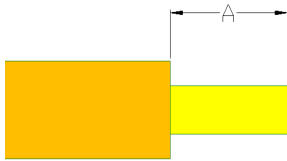
用M8螺丝将接好线的线耳与插座导体锁在一起



用内六角扳手锁紧螺丝，锁紧扭力为2.0N.m;

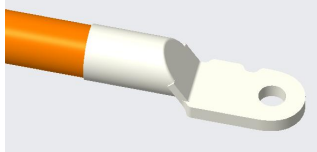
**【2.5】螺柱式**

**【2.5.1】下剥导线**

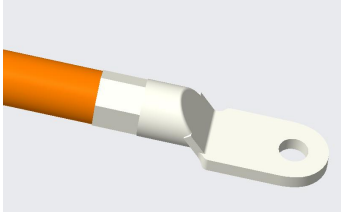


建议剥线尺寸			
型号	适配电缆	电缆外径(mm)	"A"尺寸(mm)
E150	2 AWG (35mm <sup>2</sup> )	φ 11.5±0.5	17.0±0.5
E200	1/0 AWG (50mm <sup>2</sup> )	φ 13.6±0.5	17.0±0.5
E250	2/0 AWG (70mm <sup>2</sup> )	φ 15.0±0.5	17.0±0.5

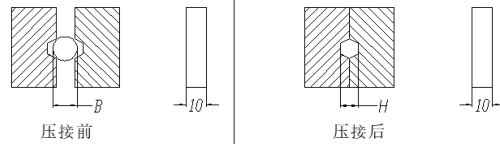
**【2.5.2】导线铆压接线线耳(线缆采用六边形刀具压接)**



将剥线端装入准备好的接线线耳中

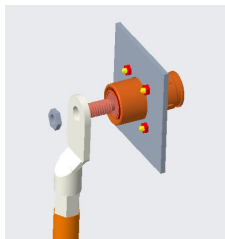


导线截面积 (mm <sup>2</sup> )	压接高度H (mm)	端子拉脱(N)
2 AWG (35mm <sup>2</sup> )	8.5±0.15	≥2700
1/0 AWG (50mm <sup>2</sup> )	10.5±0.15	≥2700
2/0 AWG (70mm <sup>2</sup> )	11.8±0.15	≥2700

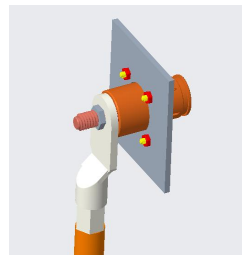


选好合适压块，用液压钳将导线与接线线耳压紧

**【2.5.3】导线连接**



将线耳套在螺柱上，锁上M8螺母



用扳手锁紧螺丝，锁紧扭力为2.0N.m;